

## SUPERFICIES

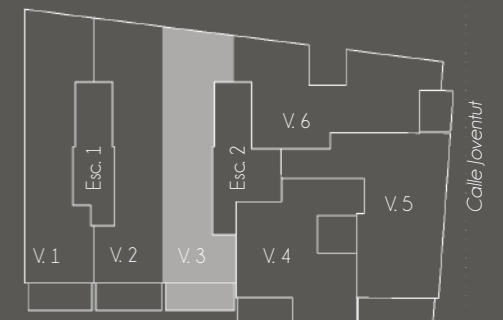
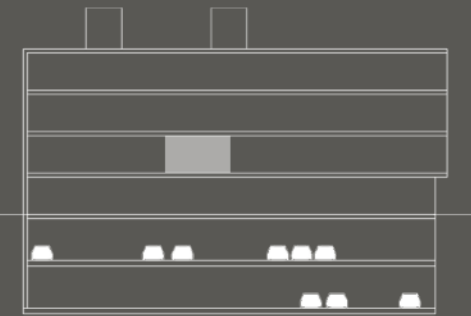
SUP. CONSTRUIDA:	97,60 m <sup>2</sup>
SUP. ÚTIL:	83,75 m <sup>2</sup>
SUP. TERRAZA:	12,20 m <sup>2</sup>



E: 1/75



## ESQUEMA



Av. del Camp d'Elx

## PLANTA PRIMERA

Escalera 2, vivienda 3