



## SUPERFICIES

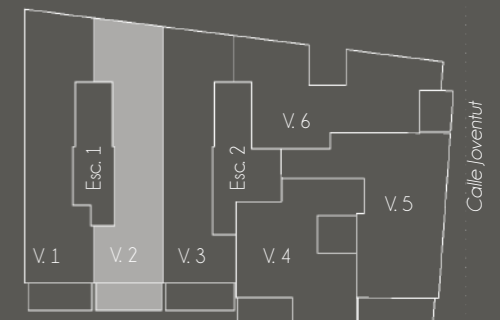
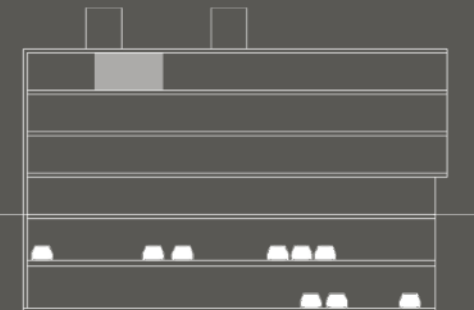
SUP. CONSTRUIDA:	96,45 m <sup>2</sup>
SUP. ÚTIL:	82,95 m <sup>2</sup>
SUP. TERRAZA:	15,90 m <sup>2</sup>



E: 1/75



## ESQUEMA



Av. del Camp d'Elx

## PLANTA ÁTICO

Escalera 1, vivienda 2